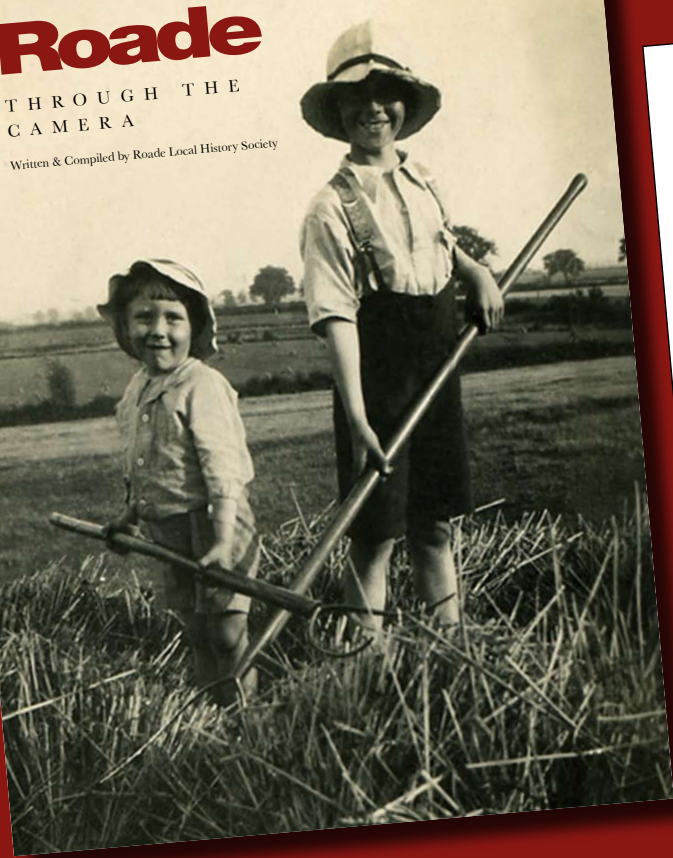


Roade

THROUGH THE CAMERA

Written & Compiled by Roade Local History Society



Images of a Northamptonshire country parish and its people, past and present

This book includes over 500 illustrations, documents and photographs, taken from the archives of Roade Local History Society, which aim to give a balanced view of the village, its people, its buildings and the major impact of its industry.

The reader is introduced to Roade by an overview, followed by a walk around the village to illustrate what residents and visitors would have seen at various times in the past. The book then covers work, leisure, clubs and pubs, sports, schools, church life, weddings, farms, wartime, and celebrations. Here can also be found the story of the railway and its famous cutting which have had such a great influence on the village and its residents for nearly 200 years. The concluding chapter illustrates the people of Roade enjoying village life.

The comprehensive index contains over 450 surnames of people appearing in the photographs or mentioned in the text.



Roade Football Club - 1904

Before the Reformation there were wall paintings and frescoes in the church and the tower. The tower was built in the 12th century and the church was built in the 13th century. The tower was built in the 12th century and the church was built in the 13th century.



Hyde Farm House dates from the 14th century, when it had a tower. The tower was built in the 12th century and the house was built in the 13th century.

The tower of the church was built in the 12th century and the church was built in the 13th century. The tower was built in the 12th century and the church was built in the 13th century.

Hyde Farm House was built in the 14th century. The tower was built in the 12th century and the house was built in the 13th century.